



PLATANOS COLLEGE









An outstanding school for
pupils of all abilities

Year 11

Formal Examination Week

Monday 2nd October 2017 to Friday 6th October 2017

Guide to Examinations

| | |
|---|---|
|  | <p>Make sure that you use the toilet <u>before you line up</u> in the morning. Unless you have a known medical condition backed up by a note from your GP, it is highly unlikely you will be given permission to leave the examination room once the examinations have begun. You may bring a small bottle of plain water to the exam room, <u>but the labelling must have been removed before the exam</u>.</p> |
|  | <p><u>The school day will run as normal, beginning with registration. You will be in normal lessons when you do not have a timetabled examination.</u></p> |
|  | <p>Equipment will not be provided for you. The loaning and borrowing of equipment between candidates during examinations is <u>not permitted</u>. Therefore make sure well in advance of the examination week that you have all the equipment you will need (black pens, pencils, ruler, rubber, calculator, colouring pencils, and spares of everything).</p> |
|  | <p>The only type of pencil-case you are allowed to have on your examination desk is a transparent one. If you haven't yet got one, purchase one in good time for the exams.</p> |
|  | <p>Bring a packet of tissues with you in case you need them.</p> |
|  | <p>Mobile phones must be switched off. Smart watches, tablets or any electronic equipment are strictly forbidden, as is any equipment which is likely to make a sound which may distract others.</p> |
|  | <p>There is <u>no talking in the examination room</u> under any circumstances. Unless an invigilator/ teacher has spoken to you, you should remain silent. Any form of communication between candidates, whether written or verbal, no matter what the content, will be treated as misconduct: your paper will be cancelled and you will achieve an automatic Saturday morning detention. Therefore, it is best to remain silent from the time you enter the examination room to the time you leave. In addition, any attempt to distract other candidates, whether verbal or non-verbal, will be dealt with severely.</p> |
|  | <p>Once any instructions have been given and the examination has begun, you may only put up your hand if you are facing an emergency. No questions should be asked about the examination itself, as an answer would give you an unfair advantage over other candidates. Therefore listen carefully to any instructions you are given, read the instructions on the paper itself, and use your initiative.</p> |

HOW TO PERFORM WELL IN EXAMINATIONS

This guide is intended to help you with your examination preparation, so that you can make the most of what you have learned. It does NOT offer you a way around the problem of lack of effort in the past, but it CAN help you make the best use of the time you have left! The most important thing is to **LISTEN** and **PARTICIPATE** in class. Pay attention and ask for help if/when you need it. The harder you work in class **NOW**, the easier your revision and preparation will be later.

PLAN YOUR REVISION

- Work out how long you've got to revise before the examinations, and plan how best to use that time.
- Prepare a revision timetable.
- Pace yourself, revisiting each subject area regularly in the weeks before the examinations.
- Don't fool yourself that 'cramming' the night before an examination will work! **It won't.**

PREPARATION

- Be organised. Keep your folders, books etc. tidy so that you don't have to waste time looking through clutter.
- Read the subject pages in this booklet carefully to find out what will be examined in each subject.
- Don't try to revise where there are distractions, like the TV or your games console.
- Eat well, sleep well and take physical exercise – staying in one room day after day is unhealthy. You won't perform well if you've locked yourself up with books for weeks!
- Your brain can only concentrate for certain periods of time, so take regular breaks and treat yourself to a reward – go out for a walk, play football, listen to music.
- Don't let breaks take over though – stick to strict time limits, and don't slump for long periods in front of the TV or on your mobile phone and tablet.
- Make sure you know what equipment you will need for each examination. Make sure you know which exams are on which days.
- If you are ill on the day of an examination, make sure your parent/guardian telephones the school immediately to explain.
- Make sure you are comfortable before you go into the examination room – (e.g. make sure you have been to the toilet).

DON'T PANIC!

Remember, examinations are NOT designed to catch you out – rather to allow you to show what you have learned. Being calm and thoughtful in the examination will help you get the most out of your preparation.

EQUIPMENT

NOTICE

Please make sure that your son/daughter is properly equipped for the forthcoming examinations.



- A transparent pencil case
- Several black pens and pencils
- A rubber, ruler and pencil-sharpener
- Mathematical equipment (protractor, set-square, compasses and a working scientific calculator).

English

Year 11: Jekyll and Hyde and fiction writing

Topics:

You will be assessed on R.L. Stevenson's *Dr Jekyll and Mr Hyde*. Think about the key characters as well as the themes such as the duality of man. You will also be assessed on fiction writing which is a requirement of your GCSE English Language (Paper 1) exam.

Skills:

The following skills will be assessed:

Assessment Objective 1: Can I identify and interpret explicit and implicit information and ideas?

Assessment Objective 2: Can I analyse the writer's use of language and structure?

Assessment Objective 3: Can I comment on the significance of context?

Assessment Objective 5: Can I respond adapting the correct form and can I structure my work effectively?

Assessment Objective 6: Can I vary my sentence structure as well as my punctuation and vocabulary?

What should you do to help you revise?

- GCSE Bitesize (website)
- Read extracts of the play
- Use your exercise book

What is the outline of the exam and how will it be assessed?

You will have a Literature and a Language examination.

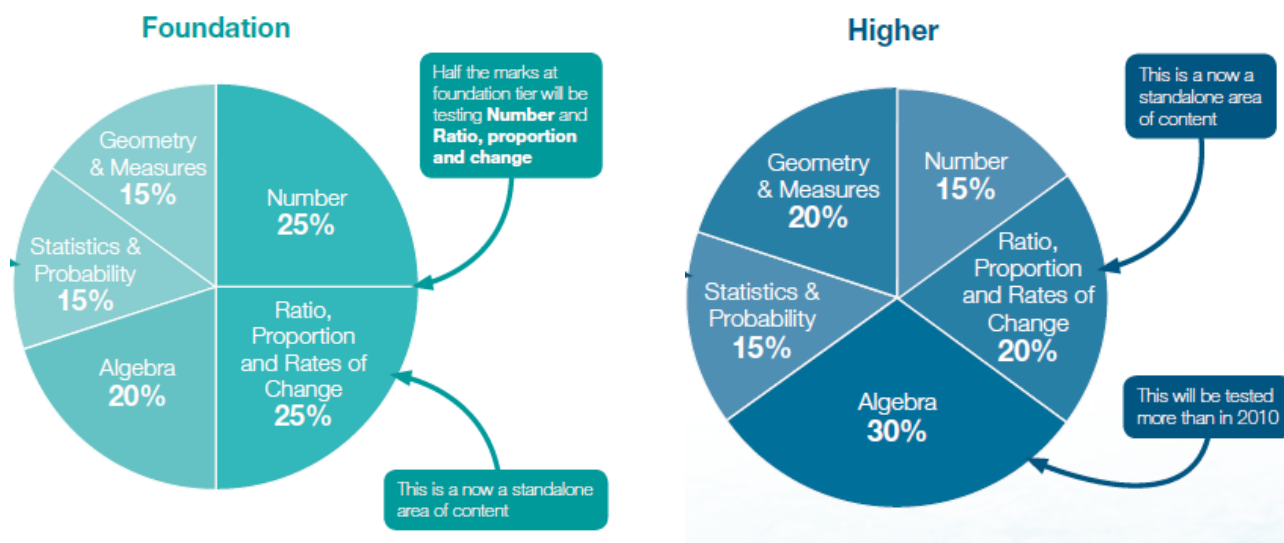
You will be given an extract from the novel and must then use the extract to respond to the question (Literature paper).

You will be expected to demonstrate the ability to analyse the language and structure in the extract.

For the Language exam, you will be assessed on your ability to retrieve information in a text as well as your ability to write a transactional piece of writing.

Mathematics

The Mock Examination at half-term covers the following areas:



There are three Examination Papers:



Online Revision resources:

1. Mymaths: www.mymaths.com
2. SAM Learning: www.samlearning.com
3. BBC Bitesize KS3: <http://www.bbc.co.uk/education/levels/z4kw2hv>
4. Maths Watch: www.mathswatchvle.com

Equipment needed:

1. Pen
2. Pencil
3. Scientific calculator
4. Maths set (ruler, protractor, compasses)

Topics new to Foundation tier

- Index laws: zero and negative powers (numeric and algebraic)
- Standard form
- Compound interest and reverse percentages
- Direct and indirect proportion (numeric and algebraic)
- Expand the product of two linear expressions
- Factorise quadratic expressions in the form $x^2 + bx + c$
- Solve linear/linear simultaneous equations
- Solve quadratic equations by factorisation
- Plot cubic and reciprocal graphs, recognise quadratic and cubic graphs
- Trigonometric ratios in 2D right-angled triangles
- Fractional scale enlargements in transformations
- Lengths of arcs and areas of sectors of circles
- Mensuration problems
- Vectors (**except** geometric problems/proofs)
- Density
- Tree diagrams

Topics new to higher tier

- Expand the products of more than two binomials
- Interpret the reverse process as the 'inverse function'; interpret the succession of two functions as a 'composite function' (using formal function notation)
- Deduce turning points by completing the square
- Calculate or estimate gradients of graphs and areas under graphs, and interpret results in real-life cases (**not** including calculus)
- Simple geometric progressions including surds, and other sequences
- Deduce expressions to calculate the n th term of quadratic sequences
- Calculate and interpret conditional probabilities through Venn diagrams

Omitted topics:

- Trial and Improvement
- Tessellations
- Isometric grids
- Imperial units of measure
- Questionnaires
- 3D coordinates
- Rotation and enlargement of functions

Science – *Double Award*

Year 11 students will be assessed on the following topics in the B1 module they have studied in their programme:

C4 Chemical calculations

- Relative masses and moles
- Equations and calculations
- From masses to balanced equations
- Expressing concentrations

C5 Chemical changes

- The reactivity series
- Displacement reactions
- Extracting metals
- Salts from metals
- Salts from insoluble bases
- Making more salts
- Neutralisation and the pH scale
- Strong and weak acids

C8 Rates and equilibrium

- Rate of reaction
- Collision theory and surface area
- The effect of temperature
- The effect of concentration and pressure
- The effect of catalysts
- Reversible reactions
- Energy and reversible reactions
- Dynamic equilibrium
- Altering conditions

Skills that will be assessed:

Pupils will be assessed in the following areas:

- Data handling – evaluating given data and figures. Identifying patterns and relationships and making suitable conclusions.
- Gathering evidence – ways of presenting data and figures
- Investigative skills – designing investigations so that patterns and relationships between variables may be identified

Resources to use for revision:

- AQA website with a range of resources: <http://www.aqa.org.uk/subjects/science/steps-to-success-in-science>
- <http://www.freesciencelessons.com>
- BBC website with various topics and activities: <http://www.bbc.co.uk/education/subjects/zrkw2hv>
- SAM Learning with various topics and activities: <https://www.samlearning.com/>

Outline of exam paper:

Example of exam papers and mark schemes can be found on this official AQA website: <http://www.aqa.org.uk>

Science – *Triple Award* (Band A sets 1 & 2)

Year 11 students will be assessed on the following topics in the B1 module they have studied in their programme:

C4 Chemical calculations

- Relative masses and moles
- Equations and calculations
- From masses to balanced equations
- ***Yield of a chemical reaction***
- ***Atom economy***
- Expressing concentrations
- ***Titration***
- ***Titration calculations***
- ***Volume of gases***

C5 Chemical changes

- The reactivity series
- Displacement reactions
- Extracting metals
- Salts from metals
- Salts from insoluble bases
- Making more salts
- Neutralisation and the pH scale
- Strong and weak acids

C8 Rates and equilibrium

- Rate of reaction
- Collision theory and surface area
- The effect of temperature
- The effect of concentration and pressure
- The effect of catalysts
- Reversible reactions
- Energy and reversible reactions
- Dynamic equilibrium
- Altering conditions

Skills that will be assessed:

Pupils will be assessed in the following areas:

- Data handling – evaluating given data and figures. Identifying patterns and relationships and making suitable conclusions.
- Gathering evidence – ways of presenting data and figures
- Investigative skills – designing investigations so that patterns and relationships between variables may be identified

Resources to use for revision:

- AQA website with a range of resources: <http://www.aqa.org.uk/subjects/science/steps-to-success-in-science>
- <http://www.freesciencelessons.com>
- BBC website with various topics and activities: <http://www.bbc.co.uk/education/subjects/zrkw2hv>
- SAM Learning with various topics and activities: <https://www.samlearning.com/>

Outline of exam paper:

Example of exam papers and mark schemes can be found on this official AQA website: <http://www.aqa.org.uk>

Modern Foreign Languages (MfL)

OUTLINE OF THE EXAM: LISTENING

HIGHER

You will have 40 minutes and 5 minutes for reading.

FOUNDATION

You will have 30 minutes and 5 minutes for reading.

OUTLINE OF THE EXAM: READING

HIGHER

You will have 1 hour.

FOUNDATION

You will have 45 minutes.

OUTLINE OF THE EXAM: WRITING

HIGHER

You will have 40 minutes.

FOUNDATION

You will have 30 minutes.

TOPICS

You must revise key vocabulary on the topics below. Please find vocabulary **list attached**.

- Holidays (Desconéctate)
- School (Mi vida en el insti)
- Family and friends (Mi gente)
- Free time (Intereses e influencias)
- My neighbourhood (Ciudades)
- Healthy living and daily routine (De costumbre)
- Work experience (A currar)
- Environment (Hacia un mundo mejor)

SKILLS THAT WILL BE ASSESSED

- Students will be assessed in two different skills: **Listening, Reading and Writing**.

REVISION AND PREPARATION

- Revise all the vocabulary taught in lessons (<http://www.quizlet.com> and <http://www.memrise.com>)
- Practice listening & reading in Spanish (<http://www.bbc.co.uk/languages/spanish/> and <https://radiolingua.com/coffeebreakspanish/>)

History

Topics that will be assessed: Germany 1919-39

Year 11 pupils have been studying the topics as listed below. Their forthcoming exam will be in the style of a GCSE paper; however, the paper will only contain questions 1 – 4.

1. Impact of the First World War:

- Impact of the Treaty of Versailles
- Weaknesses of the Weimar government
- Threats from the left and right
- 1923, the year of crisis: Invasion of the Ruhr, Hyperinflation and Munich Beer Hall Putsch

2. Recovery of Weimar:

- Economic recovery from Hyperinflation: Dawes and Young Plan, US investment
- Political recovery: Locarno Pact, League of Nations, Social developments

3. End of the Weimar Republic:

- Impact of the Depression
- Hitler's electoral appeal and Propaganda
- The role of the SA

Skills that will be assessed:

Pupils will be assessed in the following areas:

- Recalling of key information and making a judgement.
- Analysing sources – including authorship and purpose of a source.
- Analysing interpretations to assess the validity and reasons for difference
- Students should learn the exam techniques as set out on their mark schemes for Questions 1-4.

Resources to use for revision:

- <http://www.bbc.co.uk/schools/gcsebitesize/history/mwh/germany/> - Good mind maps and quizzes
- <https://www.slideshare.net/wal147/germany-1919-1945-revision-facts-book> - Good for mind maps
- http://www.crownhills.com/Downloads/German_Depth_Study_Revision_Guide%20STE.pdf – Good for overview

Art

Recording to support ideas

Outline of the exam:

You will have 3 hours in lesson to select an image which relates to your design intentions and record it using a media of your choice. This must reflect the style of your chosen Artist. You will either draw the object from first hand (Secure level) or a photograph (foundation level).

Skills that will be assessed:

- Use of delicate and accurate line
- Accurate observation of shape and form
- Wide range and smooth application of tone to show light and dark
- Considered and appropriate media choice reflecting the Artists' style

Revision and preparation:

- ✓ Research into your chosen Artist and their style
- ✓ Practice drawing objects which relate to your theme from first hand sources
- ✓ <http://www.bbc.co.uk/schools/gcsebitesize/art/practicalities/artcraftdesign1.shtml>

Success Criteria for the exams will be available from your Art teacher.

Technology

(Designing and Making) – Investigating / Designing / Making / Analysing and Evaluating

Key areas for revision:

- A design brief
- A specification
- Design ideas
- Making of a final product
- An evaluation

Key areas for revision related to the exam criteria:

- Recall, select and communicate knowledge and understanding in design and technology including its wider effects.
- Apply knowledge, understanding and skills in a variety of contexts and in designing and making products.
- Analyse and evaluate products, including their design and production.

Success Criteria for assessment will be available from your Technology teacher.

Computer Science

ASSESSMENT TOPICS:

- Computers
- Communication and the internet
- Emerging trends, issues and impact
- Copyright, Designs and Patents Act (1988)
- Licensing
- Creative Commons Licence
- Technology patents
- Open source vs proprietary software
- Issues relating to privacy, inclusion and professionalism

SKILLS ASSESSED:

- Algorithms
- Environmental impact of technology
- Ethical impact of using technology
- Legal impact of using technology

REVISION RESOURCES:

- Pearson's Computer Science Student Book
- Classwork
- Revision Presentation
- <http://www.bbc.co.uk/education/topics/z9j7hyc>
- Computer Science Revision Booklet

Drama

Topics that will be assessed:

Component 3 – Theatre Makers in Practice (Written exam)

Component 2 – Performance from a Text (Practical exam)

OUTLINE OF THE WRITTEN EXAM

Your WRITTEN exam will be 1 hour and 30 minutes long

Section A

- Practical exploration of the set text 'Blue Stockings' by Jennifer Swale.
- Short and extended response questions about how to interpret an extract from the perspectives of a performer, a director and a designer.
- The extract will be provided in the exam paper.
- Section A is worth 45 marks.

Section B

- This section is based on your live theatre experience. For our students, this will be based on the performance of 'The Woman in Black' at the Fortune Theatre.
- Questioning will be based on aspects of the performance and the design.
- YOU MAY TAKE A MAXIMUM OF 500 WORDS OF PERFORMANCE NOTES INTO THE EXAM! The notes must be kept in school and in the official format.
- Section B is worth 15 marks.

OUTLINE OF THE PRACTICAL EXAM

Your PRACTICAL exam will take place in January, on a date agreed by the visiting examiner.

- You will need to perform two key extracts from the play 'Othello' by William Shakespeare.
- You may perform as a group (3-6), as a duologue or monologue.
- Skills to be assessed are vocal and physical skills, characterisation and communication, artistic intention and style / genre / theatrical convention (AO2).

Resources to use for Revision & Tips:

https://qualifications.pearson.com/content/dam/pdf/GCSE/Drama/2016/Specification%20and%20sample%20assessments/gcse_drama_sams_L1_L2.pdf

When preparing for Component 3, ensure you write using as much of the technical vocabulary given to learn from the Term 1 homework as applicable. When preparing for Component 2, record yourself and play back your rehearsals to improve clarity of delivery for vocal and physical skills.

Physical Education

How should I revise?

- As **ACTIVELY** as possible!!!
- Revision is **NOT** just re-reading your notes/ textbooks/ revision guides.

Where should I revise?

In a quiet room (maybe a bedroom) with:

- A comfortable temperature
- Good lighting
- A table to work at
- A clock

Which technique should I use?

Find the technique which **works best for you!**

Mind Maps, Revision Cards, Make Notes, Clear layout, Use Highlighters, Use Diagrams, Use Class Notes, GCSE Pod, Revision Guides and Textbooks!

Reinforcing your memory – get someone to test you from the notes / cards / mind maps / revision posters.

PE

- **Students will be sitting the AQA GCSE Physical Education Paper**
- **You will have 1 hour 15 minutes for the written paper.**

The Exam

- The first question will be a multiple-choice type question
- The second part of the paper will be short answered questions
- The third part of the paper will be two extended answers (8 Marks)

Specific PE tips:

- Answer all questions
- Underline key words in the question
- Identify how many marks have been awarded and make that amount of separate points i.e. 3 marks means write 3 answers
- Give specific physical activity examples, do not just name a sport i.e. dodging your opponent in Basketball
- Try to answer all questions

Try these websites:

www.s-cool.co.uk

www.teachpe.com/gcse_pe_exam_revision_questions_answers

www.bbe.co.uk/schools/gcsebiteize/pe

Topics that youll be assessed in:

- To be able to state and describe all fitness components.
- Be able to apply each component to extreme sporting examples with varying justifications.
- List reasons for fitness testing and state limitations for testing.
- Be able to list and justify basic protocols for tests and explain how to administer tests accurately, making links to sports.
- Be able to state the principles of training and how they can be applied to a range of sports.
- Be able to name and describe each type of training and begin to evaluate suitability for each sport.